

## TREATMENT PLANT APPROVAL 11/2021

*Plumbing and Drainage Act 2018*

### Approval

1. The **OzziKleen RP10** (“the system”) described in the Specifications and Drawings in the attached Schedule and manufactured by **Neatport Pty Ltd** (ABN 62 063 770 534) (“the manufacturer”) has been assessed in accordance with the Queensland Plumbing and Wastewater Code (QPW Code) dated 26 October 2017.
2. Approval is granted for the secondary quality wastewater treatment system, subject to compliance by the manufacturer with the requirements of the *Plumbing and Drainage Regulation 2018*, and the conditions of approval detailed below.
3. This approval, the conditions of approval and the Schedule comprise the entire Treatment Plant Approval document.
4. Any modification by the manufacturer to the design, drawings or specifications scheduled to this approval must be approved by the Chief Executive.

### Conditions of approval

5. The manufacture, installation, operation, service and maintenance of the systems must be in conformity with the conditions of this Treatment Plant Approval.
6. The secondary quality wastewater treatment system, which is an example of the approved systems, may only be used on premises that generate per day:
  - (a) a maximum hydraulic loading of 2,000 litres; and
  - (b) a maximum organic loading of 700grams BOD<sup>5</sup>
7. The system must continue to meet the requirements of secondary quality wastewater treatment system, producing the following effluent quality:
  - (a) 90% of the samples taken must have a BOD<sup>5</sup> less than or equal to 20 g/m<sup>3</sup> with no sample greater than 30g/m<sup>3</sup>.
  - (b) 90% of the samples taken must have total suspended solids less than or equal to 30g/m<sup>3</sup> with no sample greater than 45g/m<sup>3</sup>.
  - (c) 90% of the samples taken must have a thermotolerant coliform count not exceeding 200 organisms per 100 mL with no sample exceeding 1000 organisms per 100 mL.
  - (d) Total chlorine concentration must be between 0.5g/m<sup>3</sup> and 2.0 g/m<sup>3</sup> in four out of five samples taken.
8. Each system must be serviced in accordance with the details supplied in the owner’s operation and maintenance manual.
9. This approval does not extend, apply to, or include the land application system used in conjunction with an approved system installed on premises.

#### Treatment Plant Approval

Approved by: Stacey McInnes

Delegated Authority

Department of Energy & Public Works

10. Each system must be supplied with —

- (a) a copy of this Treatment Plant Approval document;
- (b) details of the system;
- (c) instructions for authorised persons for its installation;
- (d) a copy of the owner's manual to be given to the owner at the time of installation; and
- (e) detailed instructions for authorised service personal for its operation and maintenance.

11. At each anniversary of the Treatment Plant Approval date, the supplier must submit to the Chief Executive a list of all systems installed in Queensland during the previous 12 months. Where the Chief Executive is notified of any system failures the Chief Executive may randomly select a number of installed systems for audit. The Chief Executive will notify the supplier's nominated NATA accredited laboratory which systems are to be audited for BOD<sup>5</sup> and TSS. The sampling and testing of the selected systems, if required, is to be done at the supplier's expense. The following results must be reported to the Chief Executive;

- a)Address of premises;
- b)Date inspected and sampled;
- c)Sample identification number;
- d)BOD<sup>5</sup> for influent and effluent; and
- e)TSS for influent and effluent.

12. The Chief Executive may, by written notice, cancel this approval if the manufacturer/supplier fails —

- a)to comply with one or more of the conditions of approval; or
- b)within 30 days, to remedy a breach, for which a written notice been given by the Chief Executive.

13. This approval may only be assigned with the prior written consent of the Chief Executive.

14. This approval expires on 01 January 2024 unless cancelled earlier in accordance with paragraph 12 above.

**Stacey McInnes**  
**A/Director**  
**Plumbing, Drainage and Special Projects**  
**Building Legislation and Policy**  
Date approved: 23 March 2021

Level 7,  
63 George Street Brisbane  
GPO Box 2457, Brisbane Qld 4001  
**Telephone** +61 7 3008 2557  
**Facsimile** +61 7 3237 1248  
**Website** [www.hpw.qld.gov.au](http://www.hpw.qld.gov.au)

ABN 61 331 950 314

**Treatment Plant Approval**

Approved by: Stacey McInnes

Delegated Authority

Department of Energy & Public Works

**TREATMENT PLANT APPROVAL No. 11/2021**  
*Plumbing and Drainage Act 2018*

**SCHEDULE**

**Attachment 1**

Drawings and Specifications for the

**OzziKleen RP10**

**Treatment Plant Approval**

Approved by: Stacey McInnes

Delegated Authority

Department of Energy & Public Works

## SPECIFICATIONS

Parameter	Raw Wastewater Characteristics
Wastewater treatment capacity	10 persons EP at 200 l/person/day
Maximum hydraulic load	2,000 l/day
Biological Oxygen Demand (BOD <sub>5</sub> )	350 mg/litre or 70 g/day/person
Total Suspended Solids (TSS)	350 mg/litre or 70 g/day/person
Fats, Oils and Grease (FOG)	75 mg/litre. For restaurant applications, a grease trap must be fitted upstream of the treatment plant to remove grease and oils.
pH	6<pH<10
Wastewater temperature range	10 C to 38 C

### Treatment Plant Construction:

Tank and components  
All Pipe work

Polyethylene (MDPE)  
PVC

### Electrical Equipment:

Air Blower  
Effluent Pump  
Controls

LP80HN  
Submersible  
Electronic (OK1 Control Board)

### Alarm System:

Alarm System  
Alarm signal

24VDC Audio/Visual  
Indicator lights for High Water  
Power & Blower

### Aeration Tank:

Operating Volume  
Aeration tank volume  
Residence time  
Buffer Zone

4.1m<sup>3</sup>  
5.3 m<sup>3</sup>  
46 hr  
1m<sup>3</sup> (approx.)

### Disinfection equipment:

Chlorinator Type  
Chlorine min contact time (max flow)

Tablet Dispenser Cassette  
30 min

### Motor Box:

Equipment Contained

Air Blower, Control Board,  
Decanter Solenoid Valve equipment

### Effluent Pump (standard):

Effluent pump duty  
Pump Mounting

100 litres/min @ 8 m head  
Suspended on discharge pipe

### Optional Equipment

#### Rapid Sand Filtration Equipment:

Flow rate (max)

250 litre/min

#### Nutrient Reduction Equipment:

Process control  
Phosphate reduction process

Electronic  
Chemical dosing / Sludge wasting

#### Sock Filters

#### Lifting/Pump Stations

#### Other Customization available

120/210/Other Microns  
SLS250, PT500, other sizes available  
Please enquire

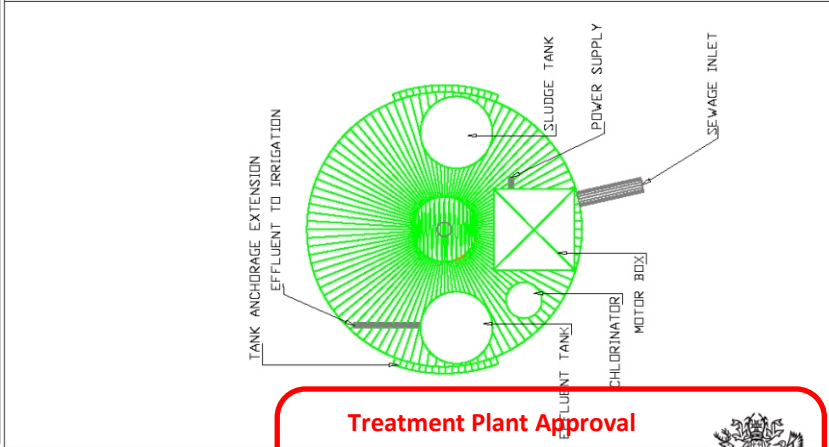
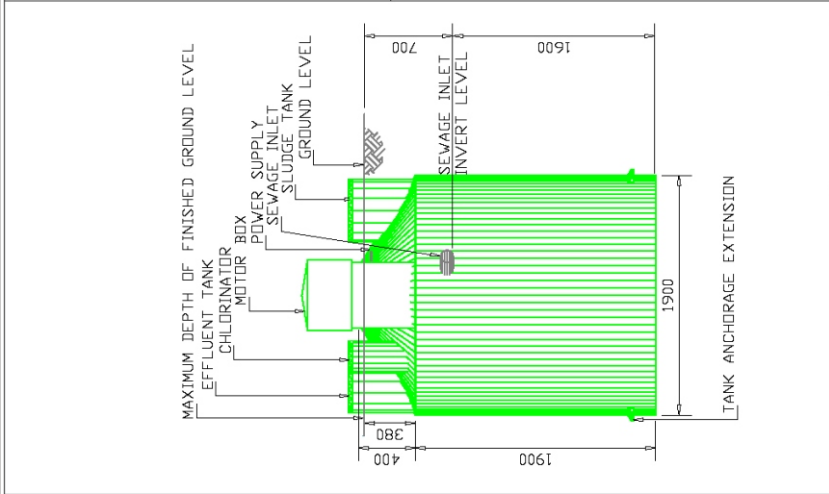
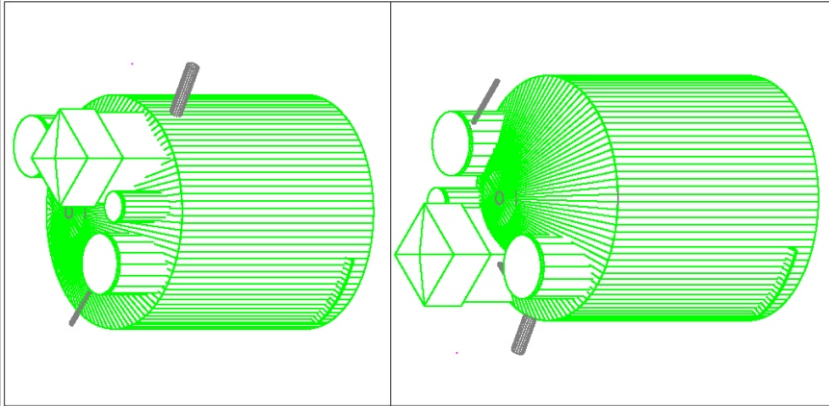
**Irrigation Equipment:** Basic irrigation equipment is supplied with the treatment plant. The irrigation system could be of several different formats. Check with Local Authority requirements.

Document No: P002  
Revision: N  
Revision Date: 03/04/2012

**Treatment Plant Approval**  
Approved by: Stacey McInnes  
Delegated Authority  
Department of Energy & Public Works



# SYSTEM DRAWING

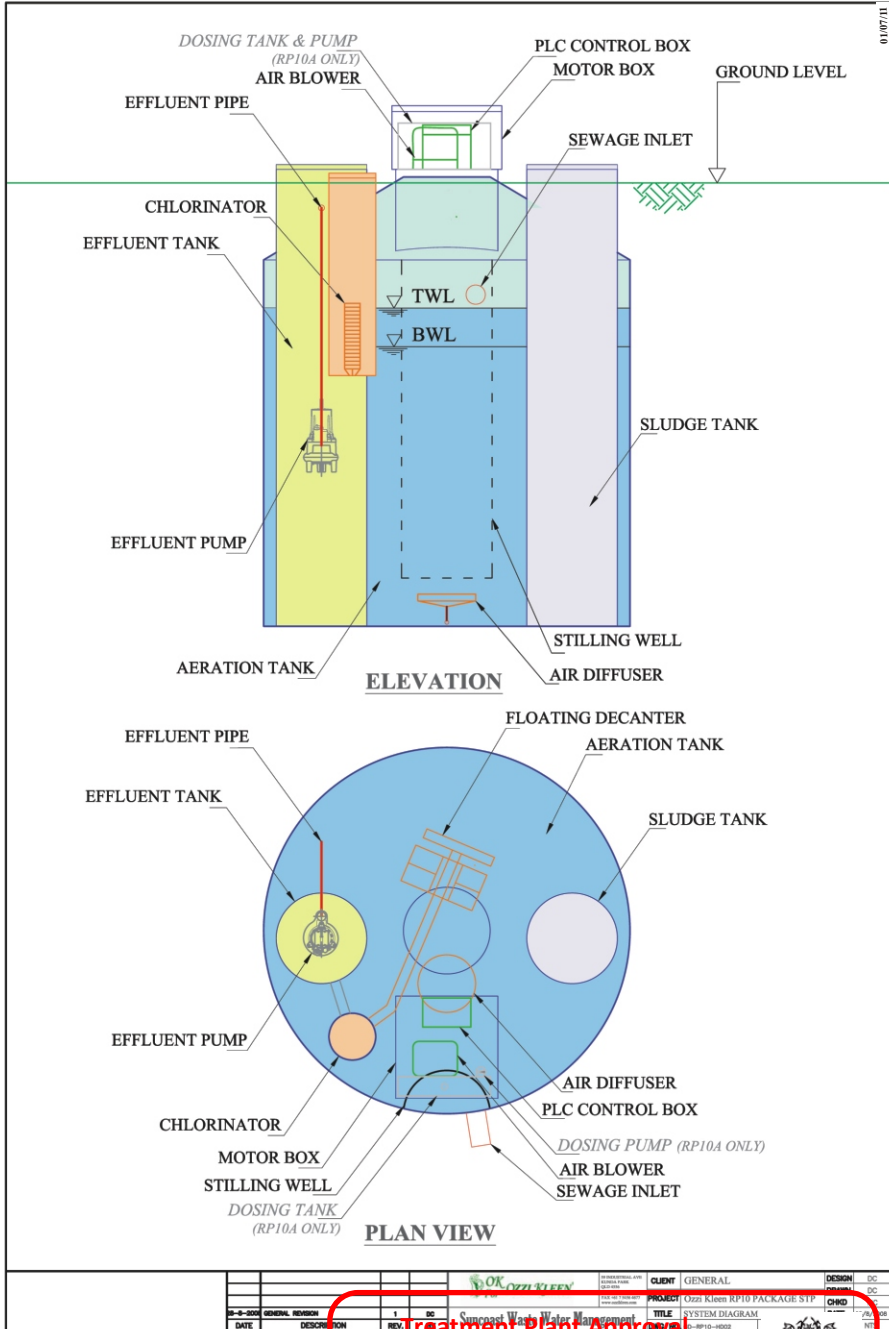


	DC	DC	DC	DC	DC
DESIGN	DRAWN	CHKD	DATE	SCALE	NTS
GENERAL					
OZZI KLEEN AWTS RP10					
SYSTEM DETAILS					
GD-RP10-HD01				REV	1
CLIENT		PROJECT		TITLE	
99 INDUSTRIAL AVE BRISBANE QLD 4000 PH: 07 3208 4999 FAX: 07 3208 4997 WWW.OZZIKLEEN.COM		DWG NO.		OZZI KLEEN® Suncoast Waste Water Management	
26/06/08 N 03/04/2012		1 DESCRIPTION		DC BY	
REPLACE SIPHON BY DECANTER		1		DC	
DATE		REV.		BY	

Treatment Plant Approval

Approved by: Stacey McInnes  
Delegated Authority  
Department of Energy & Public Works

# SYSTEM FLOW DIAGRAM



Document No: P002  
 Revision: N  
 Revision Date: 03/04/2012

Treatment Plant Approval

Approved by: Stacey McInnes  
 Delegated Authority  
 Department of Energy & Public Works

